

DIRECT TO GARMENT PRINTER

TexJet[®]
echo²

SCALE UP YOUR
START UP OR
SMALL BUSINESS

Let it pay for itself
within 3 months!



polyprint[®]
DTG PRINTERS

Superior print quality | Easy to use | Simple to maintain

TexJet[®] echo²

Includes

- 1 SET **SEALED INK CARTRIDGES**
- **34x52 cm (13.4x20.5 in) SNAP-ON PLATEN**
- **CADLINK-RIP SOFTWARE**

Digital Factory Apparel Polyprint Edition v10

**XXL
PRINT AREA**
41x60 cm
16.x23.6 in

Want to get your money's worth?

Let's break it down

Get your investment back **within the first quarter** by producing 50 DTG t-shirts in 2 hours and selling only 25 t-shirts a day.*

*Based on 15 darks and 35 whites with a 25x20 cm (10x8 in) design at 720x720 dpi CMYK and 1440x720 dpi white (DTG printing).



MAKE YOUR CUSTOM APPAREL STAND OUT

Its tiny 3pl ink drop size **produces crisp design details**. Gain top-notch white ink density and coverage in a **single pass** for amazing prints.



CREATE A PORTFOLIO BEYOND TEES

Print on one of the **largest areas in the industry** (41x60 cm/16.1x23.6 in). **Broaden** your product line with **allover designs**, custom bed sheets, canvas shoes, denim, etc.



NO MORE INK WASTE

It remains idle **up to 30 days** without losing a drop! Now you can let it sit!



SWITCH TEXTILES WITHIN SECONDS

Its **automatic height adjustment** sets the ideal distance between fabric and printhead, so you can **dive right into production** by **easily changing** between t-shirts, hoodies, towels, totes, etc.



NO FUSS MAINTENANCE

Follow a **5min maintenance process**, remotely diagnose issues and **easily keep** a **detailed print count** to track your upkeep.

www.polyprintdtg.com



polyprint[®]
DTG PRINTERS

Tailor your TexJet[®] printer!

Choose an option that fits your needs for easy, fast and cost-effective production runs.



Ink Type

For superior DTG & DTF printing results:

- **Dupont (CMYKW):** Impeccable performance and solid repeatability. DTG & DTF compatible.
- **Power Inks (CMYK):** Gain 30% wash fastness and shorter fix times (high-volume DTG runs/daily use).



Ink Setup

Lights, darks, or both? Changed your mind? Simply change your choice!

- **CMYK +4W:** Standard for both lights and darks.
- **2x CMYK:** Only for light garments or prints without white ink (high-volume runs).



Ink supply

High volume or short runs? Daily or infrequent printing?

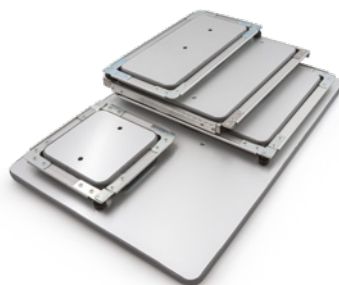
- **Sealed (single use):** Short runs and improved ink flow.
- **Refillable (bulk ink):** Frequent runs and reduced costs (fulfillment, fashion, etc.).



Pre-treatment solutions

Guarantee sharp details and strong colors, wash after wash.

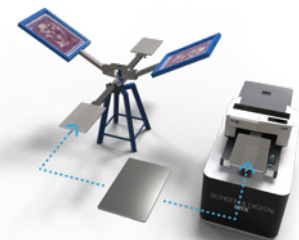
- **Dark textiles (P5001):** High print quality with rich colors and a soft touch.
- **Light textiles (Polycoating):** Improved brightness, detailed accuracy, 30% increased wash fastness on light-colored cotton and polyester.



Snap-On platens

Create a variety of personalized garments! Switch out fourteen different-sized platens (15x15 cm / 5.9x5.9 in to 41x60 cm / 16.1x23.6 in) and simplify your clothing decoration experience. An adjustable frame* keeps all textiles flat.

**Adjustable frames are available for the majority of platens*



Screen & Digital mix/ Hybrid dtg system

Get the best of both worlds!

Skip pre-treatment, lower ink costs and add special effects to increase the value of your customized products. Screen print the white under base on darks and digitally print colors to save time and money.



Your ticket to success in the DTG & DTF world!

The perfect entry-level printer for superior results, excellent efficiency and quick ROI.

Contact our DTG professionals for a personalized ROI calculation and find out whether echo² is right for you!

Technical Specifications

MAX PRINT AREA	41x60 cm (16.1x23.6 in)
PRINTABLE TEXTILES	Cotton, light-colored polyester, cotton/poly blends, linen, *with DTF solution viscose, leather, canvas, denim, dark polyester*, nylon*
PRINT RESOLUTION	CMYK +4W: 720x720, 1080x720, 1440x720, 1080x1440, 1440x1440 dpi 2x CMYK: 720x360, 720x720 dpi
PRINT HEAD	Piezoelectric DOD, 8 channels, 180 nozzles per channel
HEAD HEIGHT	2.5mm (0.1 in)
MEDIA THICKNESS	18mm (0.71 in) max
DTG PRODUCTION SPEED*	35 Light - 15 Dark t-shirts/hour CMYK: 720x720 dpi - W: 1440x720 dpi Design size: 25x20 cm (10x8 in)
* Including loading/unloading time.	
INKS	CMYKW, Water-based textile pigment inks
INK FEED	Pressurized Delivery Standard: Vacuum-sealed cartridges, 140 ml (4.73 fl oz) Optional: Pressurized refillable cartridges, 160 ml (5.41 fl oz)
CONNECTIVITY	USB 2.0, Ethernet 10/100
OPERATING SYSTEM	Windows 10
SOFTWARE	CADlink Digital Factory Apparel Polyprint Edition v10
VOLT/FREQUENCY	230V / 50-60Hz 120V / 50-60Hz
POWER	0,43 A / 97 W (230 V) 0,81 A / 97 W (120 V)
OPERATING CONDITIONS	Range: 10-30° C (50-86° F) with 30-70% relative humidity Ideal: 20° C (68° F) with 55% RH
DIMENSIONS, WEIGHT	L1280xW750xH458 mm (L50xW29xH19 in), 95kg (209.4 lbs)
PLATENS	Included: 34x52 cm (13.4x20.4 in) +Frame Optional: 11x40 cm (4.3x15.7 in) 14x30 cm (5.5x11.8 in) +Frame 15x15 cm (5.9x5.9 in) +Frame 27x14 (10.6x5.5 in) - Kid Hoodie +Frame 27x32 cm (10.6x12.6 in) +Frame 27x40 cm (10.6x15.7 in) +Frame 30x43 cm (11.8x16.9 in) - Polo 30x45 cm (11.8x17.7 in) 33x27 cm (13x10.6 in) Hoodie +Frame 41x60 cm (16.1x23.6 in) Face Mask x2 Face Mask Platen x4 Shoe Platen

TexJet[®]
echo²



2021-08-24_TEXJET ECHO 2_BIFOLD_EN_V1.1

polyprint[®]
DTG PRINTERS

POLYPRINTDTG



www.polyprintdtg.com