

job**tracker**

sales**manager**

client**service**

stock**control**

finance**viewer**

document**management**



WIDE FORMAT BUSINESS WORKFLOW

A FULL FEATURED DIGITAL PRINT BUSINESS
WORKFLOW SOFTWARE



Imagine a solution which interacts directly with your
RIP to give you detailed information about and full
control over the key processes of your jobs!

DISCOVER FLOW+





THE MOST EXTENSIVE BUSINESS AUTOMATION CONTROL TOOL FOR PRINT PROFESSIONALS



CALDERA PROFILE

Caldera Graphics is an award winning software company with 20 years of experience in imaging technologies, specializing in driving solutions for large format peripherals worldwide. **Caldera's suite of production-oriented Print and Print-to-Cut workflow solutions, offer colour management, imaging and driving solutions for large and grand format peripherals.** Each application has its own unique features specific to the graphic art market needs and resides on the powerful and proven genuine Caldera technology.



AUTOMATION AND CONTROL

Flow+, the most extensive business Automation Control tool for **PRINT** professionals.

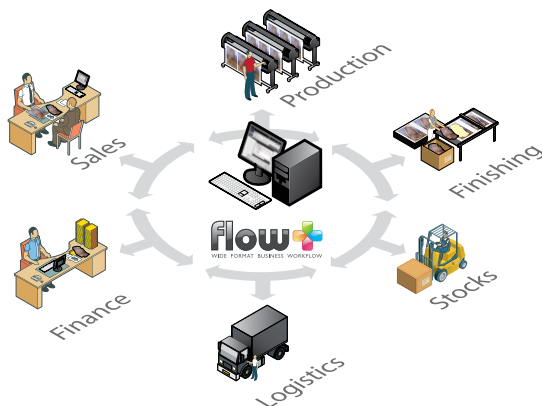
Flow+ is a complete Wide Format Business workflow solution, which provides information and control from quote to invoice, while managing the production processes (printing and finishing), inventory analysis and planning, automation of the **RIP**, outsourcing, delivery notes, financial statistics and accounting synchronization.

Caldera developed Flow+ to help its customers and print shop owners to regain possession of their shops. By possession, we mean being able to access all the information from all the departments of the company: sales, production, finishing, logistics, accounting... With Flow+, print service providers can look on the inside to improve profitability and not only focus on productivity.

Flow+ is the first Production Management System interacting directly with the **RIP**.

SPECIFICATIONS

- **Fast and flexible** installation and set-up
- Browser based access (no OS restrictions)
- **Easy of Use** (minimum training time)
- Ability to track and **manage jobs individually**
- **Collect and process** information from all departments
- Access to different modules depending on the user's needs
- Better job planning by machine and by media
- **Document Management System (DMS)**



DMS (DOCUMENT MANAGEMENT SYSTEM)

Flow+ is built around the concept of a centralized server to manage all your files. To do so, Flow+ uses the Document System Manager (DMS) that links a job to all the necessary files needed for its completion (originals, prepress, RIP & cut files).

Flow+
is a real
DMS!



GET LIVE STATUS OF YOUR JOBS!

Flow+ version 1.2.2.7 Tuesday, 28 September 2010 Active User(s): 1 epe Logout

Queue Monitor
Job Monitor
DMS Files
Job Grouping
Records
Customers Directory
Job Creation
New Job

Page Switch: My Jobs All Jobs Archived Jobs Held Jobs

Select Role: Pre-press RIP Operator Printer Operator Cutter Operator Finishing

Information
Printer: Viewing All Printers

Commands: Substrates List Ink Consumption

Viewing page 1 from 1 (Total Records: 2)

3110 Accessible & tous	BigColor Corp Advertising Poster UPS Delivery 8.88 EUR Creator: cpe	Job dispatch date 28/09/2010 17:58 Job delivery date 30/09/2010 17:50	Production TODAY approx. 1 hour(s)
3111 Accessible & tous	Emm Group Banner UPS Delivery 8.88 EUR Creator: cpe	Job dispatch date 06/10/2010 17:58 Job delivery date 14/10/2010 17:50	Production On Time 8 day(s)

HQ Banner [BACK] [Details]

width: 2.00 m x height: 4.00 m x copies: 1 → areas 8.00 m²
Printing Dates: 07/10/2010 → Finishing Date: 07/10/2010
Prepress User: cpe

Scheduler → Prepress → RIP → Printer → Cutter → Finishing → Delivery

Printer: Designjet-L65500 (Designjet-L65500) → Recipes: HQ print (Banner)
Substrate: Banner Series Vinyl → width: 2.00 m x height: 4.00 m

Printing [compute]

RIPPED File(s)
Banner_final.jpg
Cutter → Finishing → Delivery

Flow+ JobTracker Interface

jobtracker

With its job tracking module directly linked to the RIP, Flow+ gives you a complete overview of your production process, permitting job monitoring and preparation.

JobTracker is a module linked to the production that allows you to:

- **Schedule** jobs (delays, dispatching production tasks between operators, groups of jobs,...)
- **Approve** and follow closely each stage of the production,
- If needed, **modify** at all times the **production workflow** (put jobs on hold, send them back to a previous stage, redirect to another operator,...)

The configuration of the JobTracker and its possibilities (regarding production, job scheduler,...) are different depending on the rights given to each user. These rights can be modified at all times by the administrator.

Checking
production is
simple



MANAGE QUOTES AND INVOICES

Flow+ version: 1.2.7 Tuesday, 28 September 2010 Active User(s): 1 cco (ceo) Logout

flow sales utilities **salesmanager**

Sales Tools
Quotes
Sales Reports
Sales Report
Queue Monitor
Job Monitor
DMS Files
Job Grouping

Page Switch Sales Report Deleted Jobtickets

Quotes Report
Status: All Job Type: All
Search as: Sales Search: []
From Date: [] Until Date: []

Commands Search Report Clear

Viewing page 1 from 1 (Total Records: 0)

Quote Number	Customer Name	Subject	Created Date	Price + Shipping [EUR]
2.	SQ8	Systad Engha Porter	24/09/2010 10:49:50	412.00 + 0.00
3.	SQ7	Aghall test2	23/09/2010 16:30:40	55.50 + 100.00
4.	SQ6	BigColor Corp test	23/09/2010 16:14:17	252.00 + 0.00
5.	SQ5	Devicreade USA dddd	23/09/2010 14:24:44	40.00 + 0.00
6.	SQ4	Devicreade USA Porter A	22/09/2010 11:29:21	252.00 + 0.00
7.	SQ2	Client Super	20/09/2010 15:55:27	812.50 + 0.00
8.	SQ1	Sickerties Color Porter	07/09/2010 18:18:50	252.00 + 0.00
Total Value [EUR] (including VAT):				2 488.00 + 100.00

Flow+ SalesManager Interface

salesmanager

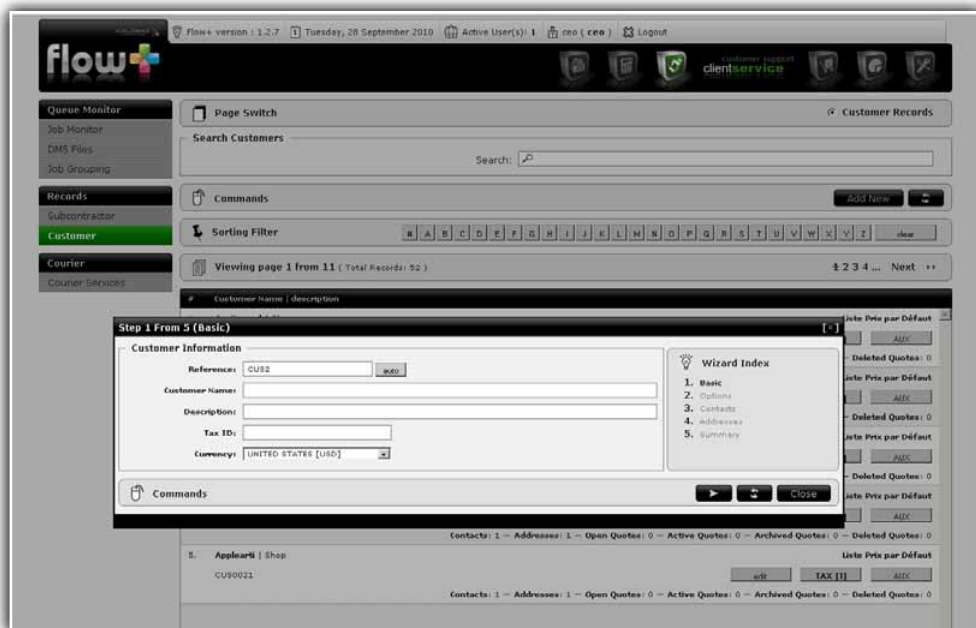
A sales management module.

SalesManager offers the sales force a complete and very efficient tool to manage all the **customers quotes**. Beyond the basic functions (create, modify, visualize offers), this module brings more on the table:

- A **better productivity** by a direct access to the Document System Manager (DMS) and the possibility of reusing an archived quote
- A clear **presentation** of all the offers (with a color code to easily identify their status) and their associated jobs
- The definition of a **customer portfolio** per sales representative

Finally, all the commercial activity can be easily analyzed thanks to several options (list of all the suppressed offers, summary by period or by agent), and then compiled in a specific report (**quote report**).

MANAGE YOUR ACCOUNTS AND KEEP AN EYE ON THE DELIVERIES



Flow+ ClientService Interface

clientservice

A client management module to organize your customer accounts, logistics and the final product delivery.

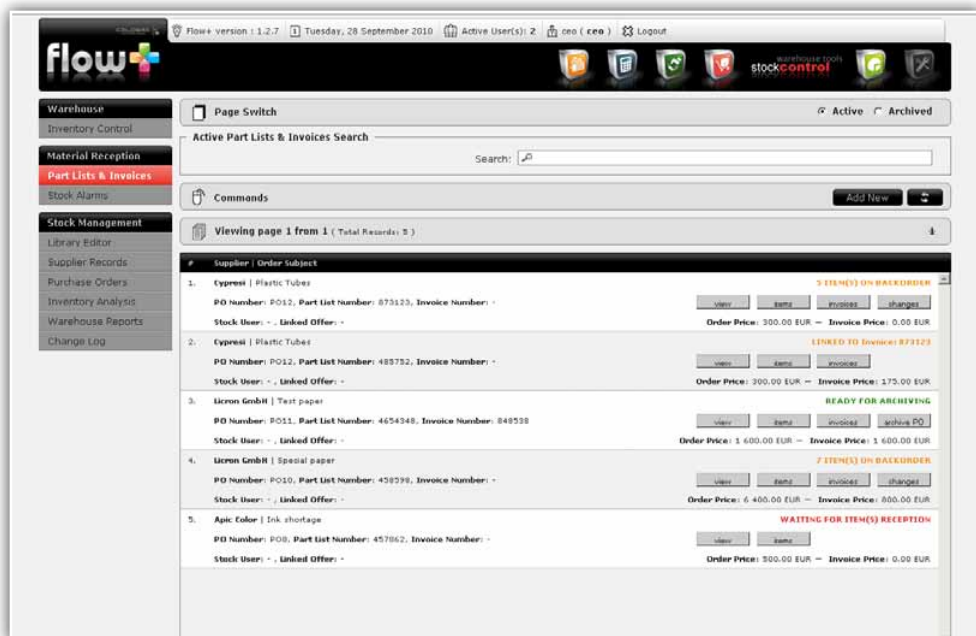
The ClientService module deals with all the jobs at the invoice/delivery stage. It allows you to:

- **Group several jobs** together and send a global invoice
- Automatically **email** the invoice to a customer

Another important aspect is the opportunity to manage the entire customer and subcontractor database:

- Visualize the databases, add an entry or modify general information
- Creation of **commercial policies** (organization of sales representatives lists and customers pricing)
- Access the customer files (DMS)

KEEP YOUR STOCK UNDER CONTROL



Flow+ StockControl Interface

stockcontrol

A complete warehouse administration module.

StockControl gives you all the necessary tools to manage efficiently and rapidly your whole inventory (media, ink, others):

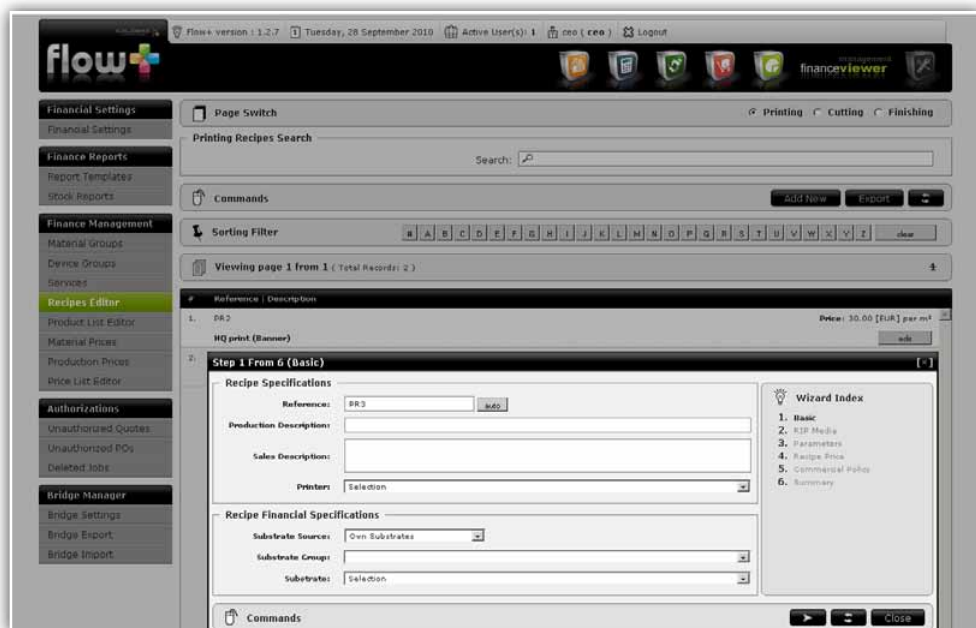
- **Real time material consumption** linked to the **production**
- Possibility of setting up **stock alarms** to inform you each time a material hits a predefined low level
- Order materials and organize their receipt (partial or total)

The state of the stock and the material consumptions are displayed in a specific report (**warehouse report**).

This module also allows you to manage the suppliers database.

**What if
managing
stock was
easy?**

MANAGE PRICES AND EXPORT YOUR DATA



Flow+ FinanceViewer Interface

financeviewer

A global administration module.

With FinanceViewer, you can set up multiple parameters:

- Definition of the **production tools**: Devices and groups of devices
- Definition of elementary operations (recipes and services) and **production range** (products and list of products)
- Creation of **price lists** (products, material, production) and templates (quotes, invoices,...)

This module also offers several tools to **analyze** and **overview** your activity:

- **Notifications of particular events** (unauthorized quotes, deleted jobs, unauthorized purchase orders...)
- **Stock reports**

Finally, you can use all the Flow+ data in third party applications, thanks to the data **import/export options**.

job**tracker**

sales**manager**

client**service**

stock**control**

finance**viewer**

document**management**

The goal of Flow+ is to guarantee constant visibility throughout the entire workflow.

A better JOB management =



Improved productivity



Efficient services



A better return on investment

Flow+ is an intelligent mix of



MIS

(Management Information System)



ERP

(Enterprise Resource Planning)



CRM

(Customer Relationship Management)

Flow+ Awards



Flow+ was awarded "Best product of the year" by SGIA wide format professionals.



Flow+ was voted as "Best Management Information System (MIS)" by the readers of Wide Format Imaging magazine.

A solution rewarded by professionals and the specialized press

