



Kornit  
Digital  
bonding  
matters

Get the best out of your  
Kornit DTG printer

**Get  
the best  
out of  
your Kornit  
DTG printer!**

**Enjoy endless  
possibilities  
with your  
Kornit printer  
and take  
your business  
to the  
next level.**

**With our variety  
of pallets, print on more  
garments than ever before.  
Hats, totes, dresses and  
skirts, denim and leggings,  
all t-shirt sizes and cut  
pieces, shoes, lace, on  
buttons, pockets, zippers  
and so much more.**

# Baby and Children Pallet



## Application:

Suitable for baby & children garments  
and small cut pieces

**Serial Number:** 33-PALT-0008

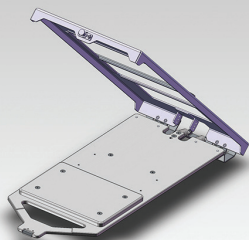
## Sizes:

27X33 cm (10.6X13 inch),

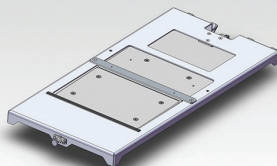
27X19 cm (10.6X7.5 inch)

## Suitable For:

**Avalanche Family, Storm II, Storm, Thunder**



open



closed

# Baby and Children Magnetic Pallet



## Application:

Suitable for baby & children garments.  
Includes magnetic cover

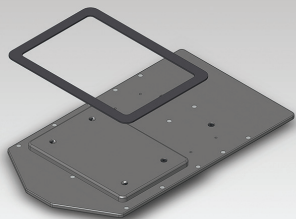
**Serial Number:** 33-PALT-0005

## Sizes:

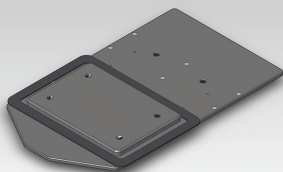
27X33 cm (10.6X13 inch), 27X26 cm (10.6X10.2 inch),  
27X19 cm (10.6X7.5 inch)

## Suitable For:

**Avalanche Family, Storm II, Storm, Thunder**



open



closed

# Children Pallet



## Application:

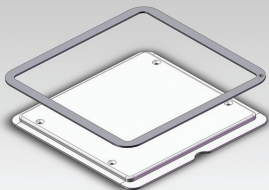
Suitable for children's shirts.  
Includes magnetic cover

**Serial Number:** 33-PALT-0016

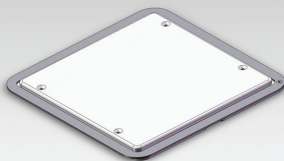
## Sizes:

27.8X28 cm (10.9X11 inch)

Suitable For:  
**Breeze**



open



closed

# Tote Pallet



## Application:

Suitable for bags

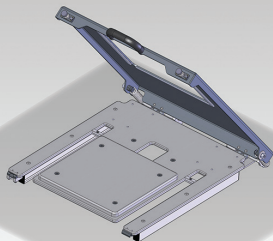
**Serial Number:** 33-PALT-0013

## Sizes:

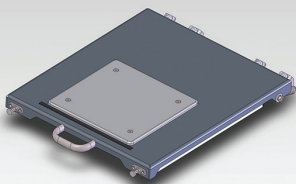
27X26 cm (10.6X10.2 inch)

## Suitable For:

**Avalanche Family, Storm II, Storm**



open



closed

# Universal Pallet



## Application:

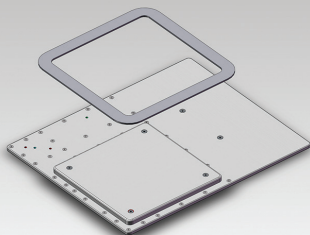
Suitable for cut pieces in different sizes: Pockets, t-shirts, curtains, jerseys, shoes. Includes magnetic cover

**Serial Number:** 33-PALT-0006

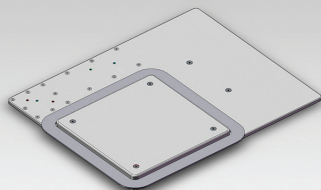
**Sizes:** 7X7 cm (2.75X2.75 inch), 14X14 cm (5.5X5.5 inch),  
21X14 cm (8.2X5.5 inch), 21X21 cm (8.2X8.2 inch),  
28X28 cm (11X11 inch)

## Suitable For:

**Avalanche Family, Storm II, Storm**



open



closed

# Super Grand Pallet



## Application:

Very large size shirts or cut pieces

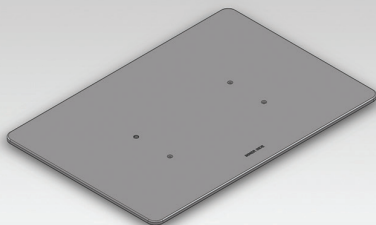
**Serial Number:** 33-PALT-0020

## Sizes:

61X90 cm (23.6X35.4 inch)

## Suitable For:

**Avalanche Family**





# Single Sleeve Pallet



## Application:

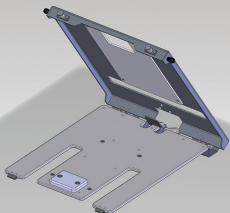
Sleeve printing

**Serial Number:** 33-PALT-0001

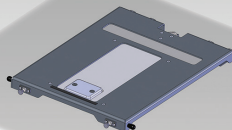
### Sizes:

7.5X9.5 cm (2.9X3.7 inch), 10X10 cm (3.9X3.9 inch),  
12X34 cm (4.7X13.4 inch)

**Suitable For:**  
**Thunder**



open



closed

# Dual Sleeve Pallet



## Application:

Sleeve printing. Includes magnetic cover

**Serial Number:** 33-PALT-0012

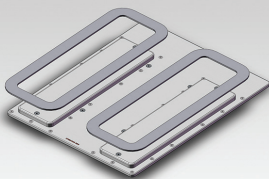
## Sizes:

11X13 cm (4.3X5 inch),

11X40 cm (4.3X15.75 inch)

## Suitable For:

**Avalanche Family, Storm II, Storm**



open



closed

# Grand Pallet (Upgrade Kit)



## Application:

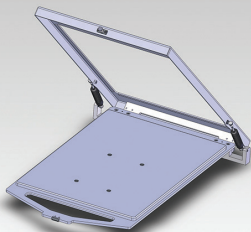
Very large size shirts or cut pieces

**Serial Number:** 33-UPGR-0003

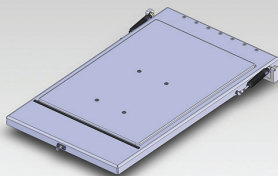
## Size:

50X70 cm (19.7X27.5 inch)

**Suitable For:**  
**Storm**



open



closed

# Grand Pallet



## Application:

Very large size shirts or cut pieces

**Serial Number:** 33-PLAT-0020

## Size:

54X70 cm (21.25X27.5 inch)

## Suitable For:

**Avalanche Family, Storm II, Storm**

